

**NOTES**

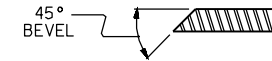
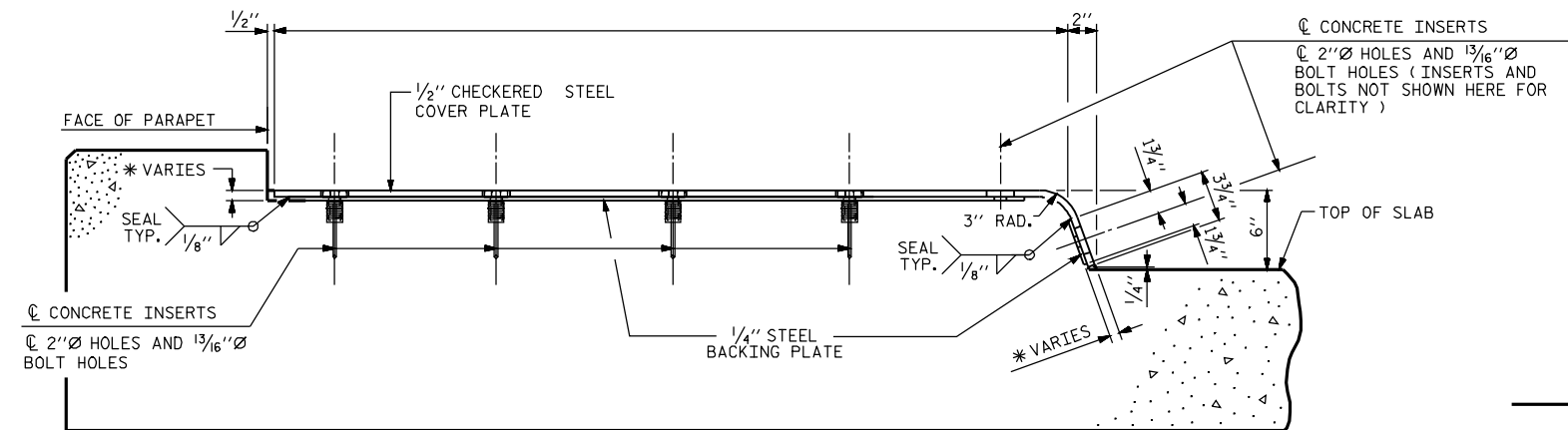
FOR MODULAR EXPANSION JOINT SEALS, SEE SPECIAL PROVISIONS.

THE STEEL PLATES SHALL CONFORM TO AASHTO M270 GRADE 36 OR APPROVED EQUAL AND BE PAINTED IN ACCORDANCE WITH THE STANDARD SPECIFICATIONS. AT THE CONTRACTOR'S OPTION, THE PLATES MAY BE METALLIZED AFTER FABRICATION, SEE SPECIAL PROVISIONS FOR THERMAL SPRAYED COATINGS (METALLIZATION).

THE 3/4" Ø HEX HEAD BOLTS SHALL CONFORM TO ASTM F593 ALLOY 304 STAINLESS STEEL.

THE 3/4" CONCRETE INSERTS SHALL BE CLOSED-END FERRULES WITH LOOPED WIRE STRUTS ATTACHED TO THEM. THE INSERTS SHALL CONFORM TO AASHTO M169, GRADE 12L14 AND SHALL HAVE A TENSILE WORKING LOAD CAPACITY OF 3000 LBS.

NO SEPARATE PAYMENT WILL BE MADE FOR FURNISHING AND INSTALLING THE COVER PLATE. THE ENTIRE COST OF THIS WORK SHALL BE INCLUDED IN THE LUMP SUM PRICE FOR "MODULAR EXPANSION JOINT SEALS".



**SECTION B - B**

	SKEW ANGLE	TOTAL MOVEMENT ALONG CL ROADWAY
END BENT #1		
BENT #1		
END BENT #2		

**END VIEW**

(NORMAL TO SIDEWALK)

\* CONCRETE RECESS DIMENSIONS:

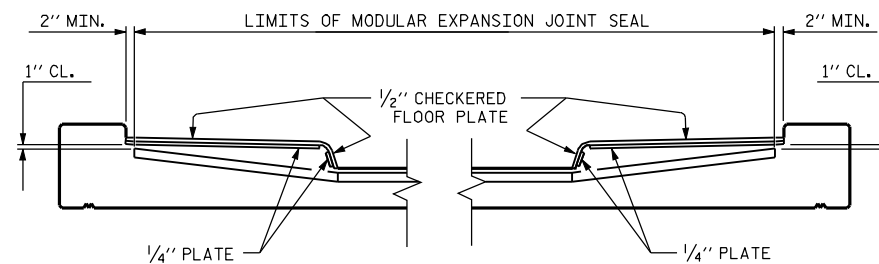
1 3/16" FOR THE SIDE OF THE JOINT HAVING THE 1/2" COVER PLATE WITH A 1/4" BACKING PLATE.

3/16" FOR THE SIDE OF THE JOINT HAVING ONLY THE 1/2" COVER PLATE.

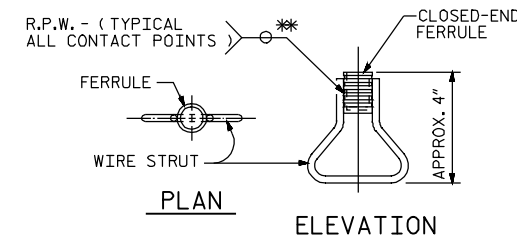
**TYPE I - PLAN VIEW**

**TYPE II - PLAN VIEW**

**COVER PLATE DETAILS**



**SKETCH SHOWING LIMITS OF MODULAR EXPANSION JOINT SEAL-SIDEWALK**



**CONCRETE INSERT**

\* EACH WELDED ATTACHMENT OF WIRE TO FERRULE SHALL DEVELOP THE TENSILE STRENGTH OF THE WIRE.

PROJECT NO. \_\_\_\_\_

\_\_\_\_\_ COUNTY

STATION: \_\_\_\_\_

SHEET OF \_\_\_\_\_

STATE OF NORTH CAROLINA  
 DEPARTMENT OF TRANSPORTATION  
 RALEIGH  
 STANDARD  
 MODULAR EXPANSION  
 JOINT SEAL DETAILS  
 FOR SIDEWALK

REVISIONS				SHEET NO.	
NO.	BY:	DATE:	NO.	BY:	DATE:
1			3		
2			4		

STD. NO. MEJS2

ASSEMBLED BY :	DATE :
CHECKED BY :	DATE :
DRAWN BY : EEM 7/96	REV. 8/16/99 MAB/LES
CHECKED BY : VAP 7/96	REV. 10/17/00R RWW/LES
	REV. 5/1/06 TLA/GM